

MONTHLY MEMBERSHIP PROGRESS REPORT

District 317 C

Results as of: 12/31/2024

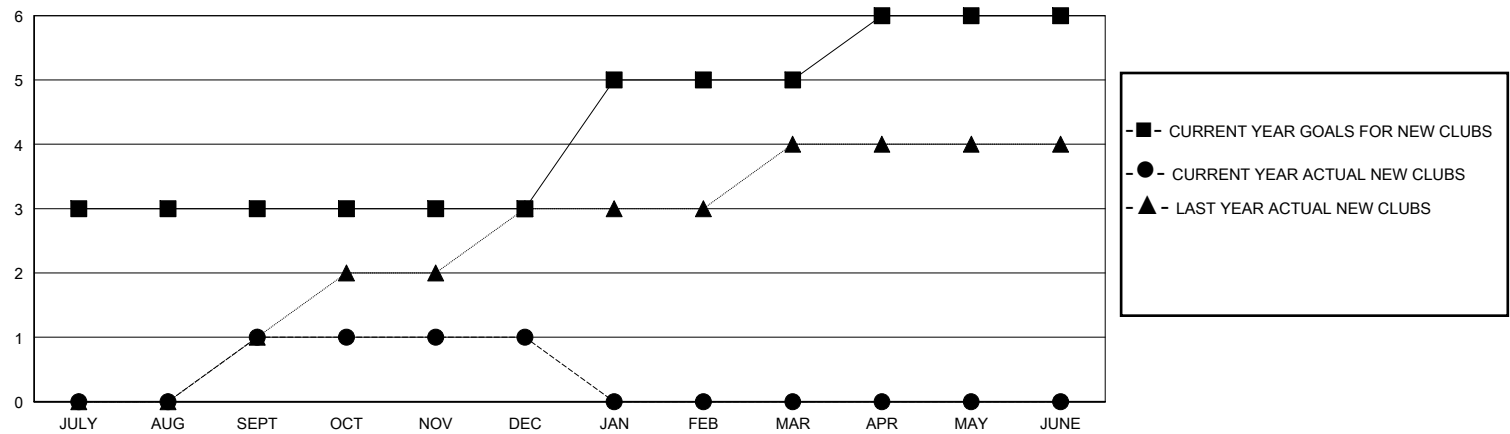
GMT:

LOCATION INDIA

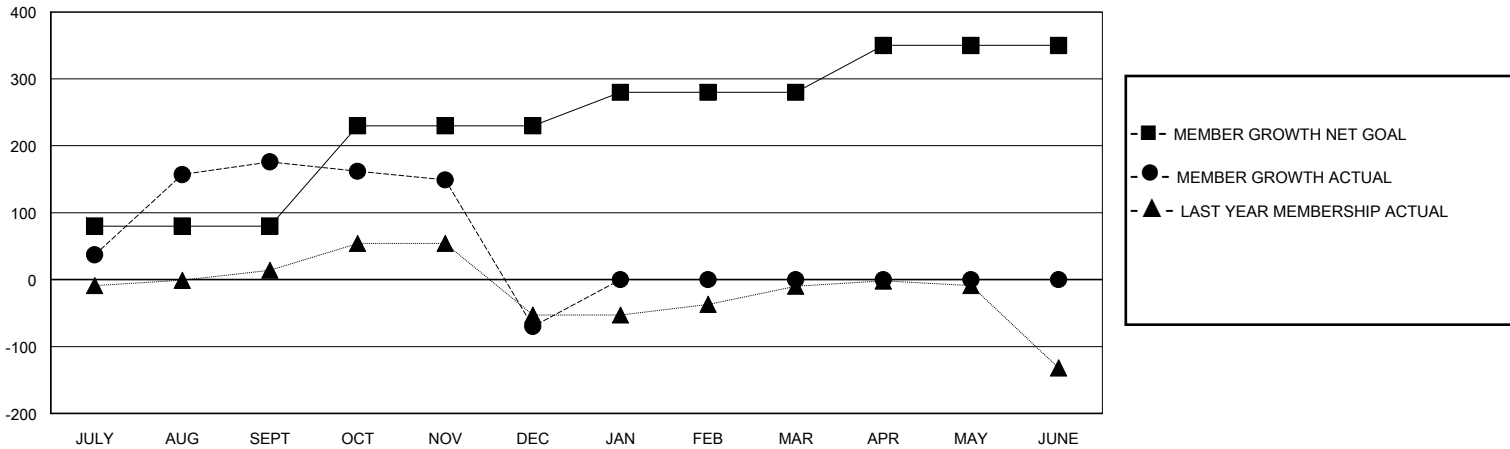
GMT CA

| Clubs | | | | Members | | | |
|-----------------------|---------------|-----------|---------------|-----------------------|------------------------|----------------------|--|
| RESULTS FOR 2024-2025 | | | | RESULTS FOR 2024-2025 | | | |
| QUARTER | NEW CLUB GOAL | NEW CLUBS | DROPPED CLUBS | QUARTER | MEMBER GROWTH NET GOAL | MEMBER GROWTH ACTUAL | DROPPED MEMBERS ACTUAL (including transfers) |
| JULY/AUG/SEPT | 3 | 1 | 0 | JULY/AUG/SEPT | 80 | 261 | 75 |
| OCT/NOV/DEC | 0 | 0 | 12 | OCT/NOV/DEC | 150 | 15 | 259 |
| JAN/FEB/MAR | 2 | 0 | 0 | JAN/FEB/MAR | 50 | 0 | 0 |
| APR/MAY/JUNE | 1 | 0 | 0 | APR/MAY/JUNE | 70 | 0 | 0 |

GOALS AND ACTUAL NEW CLUBS CUMULATIVE



GOALS AND ACTUAL MEMBERS CUMULATIVE



| | | | |
|-------------------|---|---------------------------------|----------------|
| DROPPED CLUBS: 12 | 52 CLUBS OF 115 ADDED 1 OR MORE NEW MEMBERS | GENDER DISTRIBUTION | |
| | | MALE | 2,390 (82.10%) |
| | | FEMALE | 521 (17.90%) |
| DROPPED MEMBERS | CLICK HERE FOR CUMULATIVE MEMBERSHIP DATA | TOTAL FAMILY UNIT MEMBERS | |
| DECEASED | | 0 | |
| CLUB CANCELLED | | FAMILY MEMBERS PAYING HALF DUES | |
| OTHER | | 0 | |
| TOTAL | | | |